

HOTARARE

Privind: aprobarea organigramei si statului de functii ale Spitalului Municipal « Caritas »
Rosiori de Vede

Consiliul Local al Municipiului Rosiori de Vede, intrunit in sedinta ordinara de lucru
astazi 24.06.2021

Avand in vedere:

- referatul de aprobare al primarului inregistrat sub nr. 10650/15.06.2021;
 - raportul de specialitate al Compartimentului Resurse Umane inregistrat sub nr. 10652/15.06.2021;
 - adresa inregistrata sub nr. 9179/25.05.2021 prin care Spitalul Municipal « Caritas »
Rosiorii de Vede solicita aprobarea organigramei si statului de functii
 - prevederile Legii nr. 95/2006 privind reforma in domeniul sanatatii cu modificarile
si completarile ulterioare;
 - prevederile Legii nr. 53/2003 privind Codul muncii republicata, cu modificarile si
completarile ulterioare;
 - prevederile O.U.G. nr. 162/2008 privind transferul ansamblului de atribuții și
competențe exercitate de Ministerul Sănătății Publice către autoritățile administrației
publice locale cu modificarile si completarile ulterioare;
 - prevederile HCL nr. 156/26.11.2020 privind: aprobarea organigramei si statului de
functii ale Spitalului Municipal « Caritas » Rosiorii de Vede ;
 - avizul Ministerului Sanatatii nr. XI/A/11255/SP/4382/25.04.2018
 - prevederile Ordinului nr. 1224/2010 privind aprobarea normativelor de personal
pentru asistența medicală spitalicească, precum și pentru modificarea și completarea
Ordinului ministrului sănătății publice nr. 1.778/2006 privind aprobarea normativelor de
personal;
 - prevederile Ordinului M.S. nr.1500/2009 privind aprobarea Regulamentului de
organizare și funcționare a secțiilor și compartimentelor de anestezie și terapie intensivă
din unitățile sanitare;
 - raportul de avizare a comisiei de specialitate pentru activitati social-culturale, culte,
invatamant, sanatate si familie, munca si protectie sociala, protectie copii, tineret si sport a
consiliului local ;
 - raportul de avizare a comisiei de specialitate pentru administratie publica locala,
apararea ordinii si linistii publice, a drepturilor cetatenilor, juridica si de disciplina a
consiliului local;
 - prevederile art. 129 alin. (2) lit.a) și alin. (3) lit.c) din OUG nr. 57/2019 privind
Codul administrativ cu modificarile si completarile ulterioare ;
- In temeiul art. 139 si 196 alin. (1) lit. a) din OUG nr. 57/2019 privind Codul
administrativ cu modificarile si completarile ulterioare,

HOTARASTE

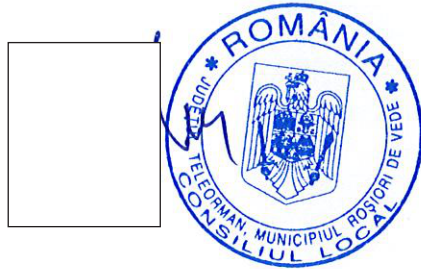
Art.1 Se aproba organigrama si statul de functii ale Spitalului Municipal « Caritas » Rosiori de Vede conform anexelor nr. 1 si nr. 2 care fac parte integranta din prezenta.

Art.2 Cu data prezentei isi inceteaza aplicabilitatea HCL nr. 156/26.11.2020 cu modificarile si completarile ulterioare.

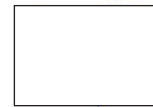
Art.3 De ducerea la indeplinire a prezentei hotarari raspund Comitetul Director si Consiliul de Administratie al Spitalului Municipal « Caritas » Rosiori de Vede.

Art.4 Prezenta hotarare se va comunica prin grija secretarului general al municipiului, in termenul prevazut de lege, autoritatilor si persoanelor interesate.

Presedinte de sedinta
Iliescu Alexandru



Contrasemneaza pentru legalitate
SECRETAR GENERAL
Cîța Mioara Iulia

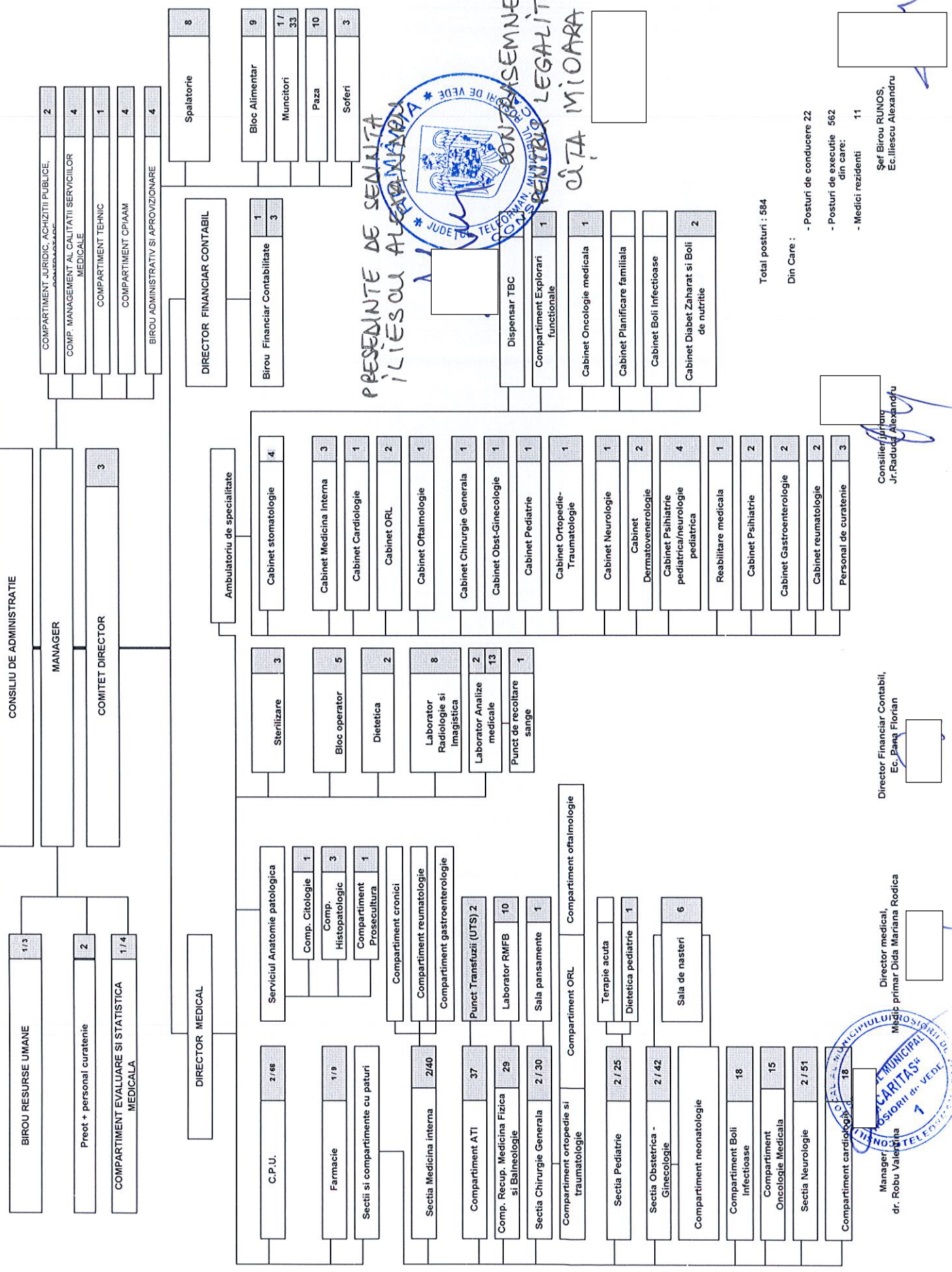


ROSIORI DE VEDE

Nr. 92/24.06.2021

Prezenta hotarare a fost adoptata cu un numar de 18 voturi „pentru”, - voturi „impotriva”, - abtineri, din totalul de 19 consilieri in functie din care 18 prezenti.

ORGANIGRAMA SPITALULUI MUNICIPAL CARITAS LA DATA 01.07.2021



PREZENTATE DE SENATA ILIESCU ALEXANDRU
 JUDETUL TELEORMANA
 CONSILIUL MUNICIPAL CARITAS LA
 JUDETUL TELEORMANA
 CONSILIUL MUNICIPAL CARITAS LA
 C. ROSARIU DE VEDE
 CONSTATAM CA
 PREZENTARE LEGALITATE
 CATA MIOARA IULI

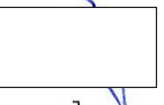
Total posturi : 584

- Din Care :
- Posturi de conducere 22
 - Posturi de executie 562 din care:
 - Medici rezidenti 11

Director Financiar Contabil,
 Ec. Paau Florian

Director medical,
 Medic primar Dida Mariana Rodica
 dr. Robu Valentina

Consilier financiar
 Jr. Radu Alexandru



SPITALUL MUNICIPAL "CARITAS" ROSIORII DE VEDE
 ADRESA : Str. Carpati nr. 33 ROSIORII DE VEDE
 TEL/FAX: 0247406611/0247466388

ANEXA NR.2 LA HCL NR.92 /24.06.2021
 PRESEDINTE DE SEDINTA
 ILIESCU ALEXANDRU
 PT. LEGALITATI
 CATA MIOARA IULI

PROPUNERE
STAT DE FUNCTII
VALABIL CU 01.07.2021



Nr. crt.	Denumire functie cf. Legii 250/2016	Specialitate	Gradata	Nivel studii	Nr. Posturi	Observatii
0	1	2	3	4	5	8
CODUCEREA EXECUTIVA - COMITETUL DIRECTOR						
1	Manager - gradul II	Medicina	5	S	1	cu delegatie
2	Director Medical - gradul II	Medicina	4	S	1	cu delegatie
3	Director Financiar Contabil - gradul II	Științe economice	5	S	1	cu delegatie

SECTIA MEDICINA INTERNA - 55 paturi,
din care COMPARTIMENT CRONICI- 20 PATURI - supraf 878 mp
COMPARTIMENT REUMATOLOGIE 3 PATURI

COMPARTIMENT GASTROENTEROLOGIE 3 PATURI

4	Medic primar - Sef sectie	Medicina	5	S	1	vacant
5	Medic primar	Medicina	5	S	1	
6	Medic specialist	Medicina	2	S	1	
7	Medic primar	Medicina	5	S	1	CIM per.determinata
8	Medic specialist	Medicina	5	S	1	rezident an I
9	Asistent med. princ. Sef sectie	generalist	5	S	1	
10	Asistent med. princ.	generalist	5	S	1	vacant
11	Asistent med. princ.	generalist	5	PL	1	CIM per.determinata
12	Asistent med. princ.	generalist	3	PL	1	
13	Asistent med. princ.	generalist	3	PL	1	
14	Asistent med. princ.	generalist	5	PL	1	
15	Asistent med. princ.	generalist	3	PL	1	
16	Asistent med. princ.	generalist	4	PL	1	
17	Asistent med. princ.	generalist	4	PL	1	
18	Asistent med. princ.	generalist	3	PL	1	
19	Asistent med.	generalist	4	PL	1	
20	Asistent med. princ.	generalist	4	PL	1	
21	Asistent med.	generalist	1	PL	1	

22	Asistent med.	generalist	2	PL	1	CIM per. determinata
23	Asistent med. debutant	generalist	0	PL	1	
24	Asistent med.	generalist	4	PL	1	
25	Asistent med. debutant	generalist	2	PL	1	CIM per. determinata
26	Asistent med. debutant	generalist	2	PL	1	CIM per. determinata
27	Asistent med. debutant	generalist	3	PL	1	vacant
28	Asistent med. debutant	generalist	1	PL	1	vacant
29	Asistent med. debutant	generalist	1	PL	1	vacant
30	Infirmiera		5	G	1	
31	Infirmiera		5	G	1	vacant
32	Infirmiera		3	G	1	
33	Infirmiera		4	G	1	
34	Infirmiera		5	G	1	CIM per. determinata
35	Infirmiera		1	G	1	
36	Infirmiera		5	G	1	
37	Infirmiera		2	G	1	
38	Infirmiera		5	G	1	CIM per. determinata
39	Infirmiera		5	G	1	CIM per. determinata
40	Infirmiera		5	G	1	CIM per. determinata
41	Infirmiera		2	G	1	vacant
42	Infirmiera		2	G	1	vacant
43	Ingrijitor curatenie		2	G	1	
44	Ingrijitor curatenie		0	G	1	
45	Ingrijitor curatenie		1	G	1	CIM per. determinata

COMPARTIMENT CARDIOLOGIE 20 PATURI

46	Medic primar- coordonator	Cardiologie	4	S	1	
47	Medic specialist	Cardiologie	3	S	1	
48	Asistent med. princ.	generalist	5	PL	1	
49	Asistent med. princ.	generalist	5	PL	1	
50	Asistent med. princ.	generalist	3	PL	1	
51	Asistent med. principal	generalist	4	PL	1	
52	Asistent med. principal	generalist	3	PL	1	
53	Asistent med.	generalist	2	SSD	1	
54	Asistent med.	generalist	3	PL	1	
55	Asistent med. debutant	generalist	2	PL	1	CIM per. determinata
56	Asistent med. debutant	generalist	4	PL	1	vacant
57	Infirmiera		5	G	1	
58	Infirmiera		3	G	1	

59	Infirmiera			4	G	1	
60	Infirmiera			3	G	1	
61	Infirmiera			3	G	1	vacant
62	Infirmiera			5	G	1	
63	Ingrijitor curatenie			5	G	1	

COMPARTIMENT ANESTEZIE SI TERAPIE INTENSIVA - 12 PATURI - 203 m.p - categoria a -III- a

64	Medic specialist-coordonator compartiment	ATI		3	S	1	vacant
65	Medic primar	ATI		2	S	1	CIM per determinata
66	Medic specialist	ATI		2	S	1	resident an III
67	Asistent med. princ.	generalist		5	S	1	
68	Asistent med. princ.	generalist		5	S	1	
69	Asistent med. princ.	generalist		5	S	1	
70	Asistent med. princ.	generalist		5	PL	1	
71	Asistent med. princ.	generalist		5	PL	1	
72	Asistent med. princ.	generalist		5	PL	1	
73	Asistent med. princ.	generalist		5	PL	1	
74	Asistent med. princ.	generalist		5	PL	1	
75	Asistent med. princ.	generalist		3	PL	1	
76	Asistent med. princ.	generalist		4	PL	1	
77	Asistent med. princ.	generalist		3	PL	1	vacant
78	Asistent med. debutant	generalist		5	PL	1	CIM per determinata
79	Asistent med. princ.	generalist		3	PL	1	
80	Asistent med. princ.	generalist		3	PL	1	vacant
81	Asistent med. princ.	generalist		4	PL	1	vacant
82	Asistent med. princ.	generalist		4	PL	1	vacant
83	Asistent med. princ.	generalist		2	PL	1	vacant
84	Asistent med. princ.	generalist		2	PL	1	vacant
85	Infirmiera			5	G	1	
86	Infirmiera			4	G	1	
87	Infirmiera			3	G	1	
88	Infirmiera			5	G	1	
89	Infirmiera			3	G	1	
90	Infirmiera			5	G	1	CIM per determinata
91	Infirmiera			5	G	1	CIM per determinata
92	Infirmiera			3	G	1	vacant
93	Infirmiera			3	G	1	vacant
94	Infirmiera			3	G	1	vacant

95	farmacia		3	G	1	vacant
96	farmacia		3	G	1	vacant
97	farmacia		3	G	1	vacant
98	farmacia		3	G	1	vacant
99	Ingrujitor curatenie		1	G	1	CIM per.determinata
100	Operabil calculab		1	M	1	vacant

UNITATE TRANSFUZIE SANGUINA

101	Asistent med	generalist	2	PL	1	vacant
102	Asistent med	generalist	2	PL	1	vacant

SECTIA CHIRURGIE GENERALA - 38 PATURI - 878

DIN CARE:

CHIRURGIE GENERALA - 15 PATURI

ORTOPEDIE SI TRAUMATOLOGIE 10 PATURI

COMPARTIMENT OFTALMOLOGIE 10 PATURI

COMPARTIMENT ORL 3 PATURI

103	Medic primar -sef sectie	chirurgie.gen.	4	S	1	
104	Medic specialist	chirurgie.gen.	5	S	1	
105	Medic specialist	chirurgie.gen.	2	S	1	
106	Medic specialist	chirurgie.gen.	2	S	1	CIM per.determinata
107	Medic primar	ortopedie	4	S	1	rezervat
108	Medic specialist	ortopedie	2	S	1	
109	Medic specialist	oftalmologie	5	S	1	
110	Medic specialist	oftalmologie	1	S	1	
111	Asistent med. princ. Sef sectie	generalist	5	PL	1	
112	Asistent med. princ.	generalist	4	PL	1	
113	Asistent med. princ.	generalist	5	PL	1	
114	Asistent med. princ.	generalist	4	PL	1	
115	Asistent med. princ.	generalist	5	PL	1	
116	Asistent med. princ.	generalist	5	PL	1	
117	Asistent med. princ.	generalist	5	PL	1	vacant
118	Asistent med. princ.	generalist	5	PL	1	vacant
119	Asistent med. princ.	generalist	5	PL	1	
120	Asistent med.	generalist	5	PL	1	
121	Asistent med.principal	generalist	2	PL	1	
122	Asistent med.	generalist	3	PL	1	CIM per.determinata
123	Asistent med.	generalist	5	PL	1	vacant

124	Medic generalist	generalist	2	PL	1	vacant
125	Infirmiera		3	G	1	
126	Infirmiera		5	G	1	
127	Infirmiera		4	G	1	
128	Infirmiera		4	G	1	
129	Infirmiera		5	G	1	
130	Infirmiera		5	G	1	vacant
131	Infirmiera		3	G	1	vacant
132	Ingrijitor curatenie		5	G	1	
133	Ingrijitor curatenie		1	G	1	CIM per.determinata
134	Ingrijitor curatenie		1	G	1	CIM per.determinata
SALA DE PANSAMENTE						
135	generalist	generalist	1	PL	1	CIM per.determinata

SECTIA PEDIATRIE - 25 Paturi - din care - 3 paturi Terapie acuta - 712mp

136	Medic primar - Sef sectie	pediatrie	5	S	1	
137	Medic specialist	pediatrie	3	S	1	
138	Medic specialist	pediatrie	2	S	1	rezident an /
139	Medic specialist	pediatrie	2	S	1	vacant
140	Asistent med. princ. Sef sectie	pediatrie	5	PL	1	
141	Asistent med. princ.	pediatrie	5	PL	1	
142	Asistent med. princ.	pediatrie	5	PL	1	vacant
143	Asistent med. princ.	pediatrie	4	PL	1	
144	Asistent med. princ.	pediatrie	5	PL	1	
145	Asistent med. princ.	pediatrie	2	PL	1	
146	Asistent med. princ.	pediatrie	5	PL	1	
147	Asistent med.	pediatrie	5	PL	1	
148	Asistent med.	pediatrie	3	PL	1	
149	Asistent med.	pediatrie	4	PL	1	vacant
150		pediatrie	1	PL	1	CIM per.determinata
		pediatrie	3	PL	1	vacant
		pediatrie	3	PL	1	vacant
153	Infirmiera		2	G	1	
154	Infirmiera		1	G	1	
155	Infirmiera		2	G	1	
156	Infirmiera		5	G	1	
157	Infirmiera		3	G	1	
158	Infirmiera		5	G	1	CIM per.determinata
159	Infirmiera		5	G	1	CIM per.determinata

160	Ingrijitor curatenie		3	G	1	vacant
161	Ingrijitor curatenie		0	G	1	CIM per. determinata
162	Ingrijitor curatenie		1	G	1	vacant

COMPARTIMENT DIETETICA

163	Asistent med. princ.	dietetica	5	PL	1	
-----	----------------------	-----------	---	----	---	--

SECTIA OBSTRETICA - GINECOLOGIE 35 paturi -1310 m.p.

din care 8 paturi neonatologie

164	Medic primar	obst.ginec	3	S	1	vacant
165	Medic primar	obst.ginec	5	S	1	
166	Medic primar	obst.ginec.	4	S	1	sef.sectie cu delegatie
167	Medic primar	obst.ginec.	3	S	1	vacant
168	Medic specialist	obst.ginec	2	S	1	
169	Medic primar	neonatalogie/p	5	S	1	
170	Medic specialist	obst.ginec.	5	S	1	rezident an I
171	Asistent med. princ. Sef sectie	obst.ginec	5	PL	1	
172	Asistent med. princ.	obst.ginec	5	PL	1	vacant
173	Asistent med. princ.	obst.ginec	5	S	1	
174	Asistent med. princ.	obst.ginec	5	PL	1	
175	Asistent med. princ.	obst.ginec	5	PL	1	
176	Asistent med. princ.	obst.ginec	5	PL	1	
177	Asistent med. princ.	obst.ginec	5	M	1	
178	Asistent med. principal	obst.ginec.	5	S	1	
179	Asistent med.	obst.ginec.	5	S	1	CIM per. determinata
180	Asistent med.	pediatrie	0	PL	1	
181	Asistent med. princ.	pediatrie	4	PL	1	
182	Asistent med. princ.	pediatrie	5	PL	1	
183	Asistent med. princ.	pediatrie	5	PL	1	
184	Asistent med.	generalist	5	PL	1	
185		generalist	0	PL	1	CIM per. determinata
186	Asistent med. debutant	generalist	0	PL	1	vacant
187	Asistent med. debutant	generalist	0	PL	1	vacant
188	Asistent med. princ.	pediatrie	5	PL	1	
189	Asistent med.	generalist	4	PL	1	
190	Asistent med.	generalist	5	PL	1	CIM per. determinata
191		generalist	5	PL	1	CIM per. determinata
192	Asistent med. princ.	pediatrie	5	PL	1	vacant
193	Asistent med.	generalist.	4	PL	1	vacant

195	Infirmiera	generalist	4	PL	1	vacant
196	Infirmiera		5	G	1	
197	Infirmiera		3	G	1	
198	Infirmiera		2	G	1	
199	Infirmiera		5	G	1	
200	Infirmiera		5	G	1	
201	Infirmiera		5	G	1	CIM per.determinata
202	Infirmiera		5	G	1	CIM per.determinata
203	Infirmiera		5	G	1	CIM per.determinata
204	Infirmiera		5	G	1	CIM per.determinata
205	Infirmiera		5	G	1	vacant
206	Ingrijitor curatenie		5	G	1	
207	Ingrijitor curatenie		5	G	1	vacant

SALA DE NASTERE

208	Asistent med. princ.	obst.ginec	4	PL	1	
209	Asistent med. princ.	obst.ginec	5	PL	1	
210	Asistent med. princ.	obst.ginec	2	PL	1	
211	Asistent med.princ.	obst.ginec	3	PL	1	
212	Asistent med.princ.	obst.ginec	5	PL	1	
213	Ingrijitor curatenie		0	G	1	

COMPARTIMENT ONCOLOGIE MEDICALA - 11 Paturi - 257 mp

214	Medic primar	oncologie med.	5	S	1	
215	Medic specialist	oncologie med.	2	S	1	
216	Asistent med. princ.	generalist	5	S	1	
217	Asistent med. princ.	generalist	5	S	1	
218	Asistent med. princ.	generalist	5	PL	1	
219	Asistent med. princ.	generalist	5	PL	1	
220	Asistent med. princ.	generalist	3	PL	1	
221	Asistent med. princ.	generalist	3	PL	1	vacant
222	Infirmiera		5	G	1	
223	Infirmiera		4	G	1	vacant
224	Infirmiera		5	G	1	
225	infirmiera		5	G	1	
226	Infirmiera		3	G	1	
227	Infirmiera		3	G	1	vacant

228	Ingrijitor curatenie		1	G	1	vacant
SECTIA NEUROLOGIE - 30 paturi 266 mp						
229	Medic primar - Sef sectie	neurologie	5	S	1	CIM per. determinata
230	Medic specialist	neurologie	2	S	1	rezident an I
231	Medic specialist	neurologie	2	S	1	CIM suspendat
232	Medic specialist	neurologie	1	S	1	
233	Asistent med. princ. Sef sectie	generalist	5	S	1	
234	Asistent med. princ.	generalist	5	S	1	vacant
235	Asistent med. princ.	generalist	5	PL	1	vacant
236	Asistent med. princ.	generalist	5	PL	1	
237	Asistent med. debutant	generalist	5	PL	1	CIM per. determinata
238	Asistent med. princ.	generalist	3	PL	1	
239	Asistent med. princ.	generalist	2	PL	1	
240	Asistent med. princ.	generalist	3	PL	1	
241	Asistent med. princ.	generalist	3	PL	1	
242	Asistent med. princ.	generalist	5	PL	1	
243	Asistent med. princ.	generalist	4	PL	1	
244	Asistent med. princ.	generalist	4	PL	1	
245	Asistent med. princ.	generalist	1	PL	1	
246		generalist	3	PL	1	CIM per. determinata
247	Asistent med.	generalist	2	PL	1	CIM per. determinata
248	Asistent med.	generalist	2	PL	1	CIM per. determinata
249	Asistent med. princ.	generalist	4	PL	1	vacant
250	Asistent med. princ.	generalist	4	PL	1	vacant
251	Asistent med.	generalist	4	PL	1	vacant
252	Asistent med.	generalist	4	PL	1	vacant
253	Asistent med.	generalist	2	PL	1	vacant
254	Asistent med.	generalist	2	PL	1	vacant
255	Asistent med. debutant	generalist	2	PL	1	vacant
256	Infirmiera		3	G	1	
257	Infirmiera		5	G	1	
258	Infirmiera		3	G	1	
259	Infirmiera		2	G	1	
260	Infirmiera		5	G	1	
261	Infirmiera		3	G	1	
262	Infirmiera		3	G	1	
263	Infirmiera		1	G	1	
264	Infirmiera		5	G	1	

265	Infirmiera			5	G	1	CIM per. determinata
266	Infirmiera			2	G	1	CIM per. determinata
267	Infirmiera			2	G	1	CIM per. determinata
268	Infirmiera			2	G	1	CIM per. determinata
269	Infirmiera			2	G	1	vacant
270	Infirmiera			2	G	1	vacant
271	Infirmiera			2	G	1	vacant
272	Infirmiera			2	G	1	vacant
273	Infirmiera			2	G	1	vacant
274	Infirmiera			2	G	1	vacant
275	Infirmiera			2	G	1	vacant
276	Infirmiera			2	G	1	vacant
277	Infirmiera			2	G	1	vacant
278	Infirmiera			2	G	1	vacant
279	Inginjitor curatenie			4	G	1	vacant
280	Inginjitor curatenie			2	G	1	CIM per. determinata
281	Inginjitor curatenie			2	G	1	vacant

COMPARTIMENT RECUPERARE MEDICINA FIZICA SI BALNEOLOGIE - 22 paturi - 712 mp

282	Medic specialist-coordonator	B.F.T.		5	S	1	CIM per. determinata
283	Medic rezident anul III	reab.med		0	S	1	CIM per. determinata
284	Asistent med. princ.	generalist		5	PL	1	vacant
285	Asistent med. princ.	generalist		4	PL	1	
286	Asistent med. princ.	generalist		5	PL	1	
287	Asistent med. princ.	generalist		2	PL	1	
288	Asistent med. princ.	generalist		3	PL	1	
289	Asistent med. princ.	generalist		4	PL	1	
290	Asistent med	generalist		0	PL	1	CIM per. determinata
291	Asistent med	generalist		4	PL	1	vacant
292	infirmiera			5	G	1	
293	infirmiera			5	G	1	
294	infirmiera			2	G	1	
295	infirmiera			5	G	1	vacant
296	infirmiera			5	G	1	
297	infirmiera			2	G	1	CIM per. determinata
298	infirmiera			2	G	1	CIM per. determinata
299	infirmiera			2	G	1	CIM per. determinata
300	infirmiera			2	G	1	CIM per. determinata
301	infirmiera			2	G	1	CIM per. determinata
302	infirmiera			2	G	1	CIM per. determinata

303	Infirmier		2	G	1	vacant
304	Infirmier		2	G	1	vacant
305	Infirmier		2	G	1	vacant
306	Infirmier		2	G	1	vacant
307	Infirmier		2	G	1	vacant
308	Infirmier		2	G	1	vacant
309	Inginjitor curatenie		0	G	1	CIM per determinata
310	Inginjitor curatenie		0	G	1	vacant

COMPARTIMENT BOLI INFECTIOASE - 20 Paturi 435 mp

311	Medic primar -coordonator	boli infect.	5	S	1	
312	Medic specialist	boli infect.	2	S	1	vacant
313	Asistent med. princ.	generalist	5	PL	1	
314	Asistent med. princ.	generalist	4	PL	1	
315	Asistent med. princ.	generalist	5	PL	1	
316	Asistent med. princ.	generalist	4	PL	1	
317	Asistent med. princ.	generalist	5	PL	1	
318	Asistent med. princ.	generalist	3	PL	1	
319	Asistent med. princ.	generalist	4	PL	1	
320	Asistent med. princ.	generalist	4	PL	1	vacant
321	Infirmiera		5	G	1	CIM per determinata
322	Infirmiera		4	G	1	
323	Infirmiera		3	G	1	
324	Infirmiera		3	G	1	
325	Infirmiera		3	G	1	
326	Infirmiera		3	G	1	
327	Inginjitor curatenie		2	G	1	vacant
328	Inginjitor curatenie		2	G	1	vacant

COMPARTIMENT DE PRIMIRE URGENTE - 712 mp

329	Medic specialist şef	med. de urgenta	4	S	1	
330	Medic specialist	med. de urgenta	3	S	1	CIM per determinata(3 ore)
331	Medic specialist	med. de urgenta	3	S	1	rezident an I
332	Medic specialist	med. de urgenta	3	S	1	vacant

333	Medic specialist	med. de urgenta	3	S	1	vacant
334	Medic specialist	med. de urgenta	3	S	1	vacant
335	Asistent med. princ.sef	generalist	5	S	1	vacant
336	Asistent med. princ.	generalist	5	S	1	
337	Asistent med. princ.	generalist	5	S	1	vacant
338	Asistent med. princ.	generalist	5	S	1	
339	Asistent med. princ.	generalist	5	PL	1	
340	Asistent med. princ.	generalist	5	S	1	CIM per. determinata
341	Asistent med. princ.	generalist	5	PL	1	
342	Asistent med. princ.	pediatrie	4	PL	1	
343	Asistent med. princ.	pediatrie	5	PL	1	
344	Asistent med. princ.	pediatrie	3	PL	1	
345	Asistent med. princ.	generalist	5	M	1	
346	Asistent med. princ.	pediatrie	3	PL	1	
347	Asistent med. princ.	generalist	4	PL	1	
348	Asistent med. princ.	generalist	3	PL	1	
349	Asistent med. princ.	generalist	3	PL	1	
350	Asistent med. princ.	generalist	5	PL	1	
351	Asistent med. princ.	pediatrie	2	PL	1	
352	Asistent med. princ.	generalist	2	PL	1	vacant
353	Asistent med. princ.	generalist	5	PL	1	
354	Asistent med. princ.	generalist	5	PL	1	
355	Asistent med.	generalist	5	PL	1	vacant
356	Asistent med. debutant	generalist	5	PL	1	vacant
357	Asistent med.	generalist	5	PL	1	CIM per. determinata
358	Asistent med.	generalist	5	PL	1	CIM per. determinata
359						vacant
360	Asistent med.	generalist	5	PL	1	
361	Registrator medical principal		5	M	1	
362	Registrator medical principal		5	M	1	
363	Registrator medical		2	M	1	
364	Registrator medical		2	M	1	CIM per. determinata
365	Registrator medical		2	M	1	CIM per. determinata
366	Registrator medical		2	M	1	vacant
367	Infirmiera		3	G	1	
368	Infirmiera		1	G	1	
369	Infirmiera		4	G	1	

370	Infirmiera		5	G	1	CIM per.determinata
371	Infirmiera		0	G	1	CIM per.determinata
372	Infirmiera		0	G	1	CIM per.determinata
373	Infirmiera		0	G	1	vacant
374	Infirmiera		0	G	1	vacant
375	Infirmiera		0	G	1	vacant
376	Infirmiera		0	G	1	vacant
377	brancardier		3	G	1	
378	brancardier		5	G	1	
379	brancardier		5	G	1	
380	brancardier		0	G	1	CIM per.determinata
381	brancardier		0	G	1	CIM per.determinata
382	brancardier		0	G	1	CIM per.determinata
383	brancardier		0	G	1	CIM per.determinata
384	brancardier		0	G	1	vacant
385	brancardier		0	G	1	vacant
386	brancardier		0	G	1	vacant
387	brancardier		0	G	1	vacant
388	brancardier		0	G	1	vacant
389	brancardier		0	G	1	vacant
390	brancardier		0	G	1	vacant
391	brancardier		0	G	1	vacant
392	brancardier		0	G	1	vacant
393	brancardier		0	G	1	vacant
394	brancardier		0	G	1	vacant
395	brancardier		0	G	1	vacant
396	brancardier		0	G	1	vacant
397	Ingrijitor curatenie		5	G	1	CIM per.determinata
398	Ingrijitor curatenie		0	G	1	vacant

FARMACIE - 330 mp

399	Farmacist sef	farmacie	2	S	1	
400	Farmacist specialist	farmacie	0	S	1	
401	Asistent medical debutant	farmacie	5	PL	1	CIM per.determinata
402	Asistent med.	farmacie	5	PL	1	
403	Asistent med.princ.	farmacie	2	PL	1	
404	Asistent med.princ.	farmacie	4	PL	1	
405	Asistent med.	farmacie	1	PL	1	CIM per.determinata
406	Ingrijitor curatenie		4	G	1	

407	Farmacist	farmacie	5	S	1	vacant/ CIM determinata
408	Operatori laborator		2	M	1	vacant

BLOC OPERATOR

409	Asistent med. princ. cu gestiune	generalist	5	S	1	
410	Asistent med. princ.	generalist	4	PL	1	
411	Asistent med. princ.	generalist	3	PL	1	
412	Asistent med. princ. cu gestiune	generalist	5	PL	1	
413	Ingrjitor curatenie		1	G	1	vacant

STERILIZARE

414	Asistent med. princ.	generalist	5	PL	1	
415	Asistent med.	generalist	5	PL	1	
416	Asistent med. princ.	generalist	5	PL	1	

DIETETICA

417	Asistent med. princ.	dietetica	5	PL	1	
418	Asistent med.	dietetica	2	PL	1	

LABORATOR ANALIZE MEDICALE - 449 m.p.

419	Medic specialist	laborator	4	S	1	
420	Medic primar	laborator	4	S	1	
421	Chimist principal - Sef laborator	chimie	5	S	1	
422	Chimist principal	chimie	5	S	1	
423	Biolog principal	bacteriologie	5	S	1	
424	Biolog	bacteriologie	2	S	1	
425	Asistent med. princ. Sef laborator	laborator	5	PL	1	
426	Asistent med. princ.	laborator	4	PL	1	
427	Asistent med. princ.	laborator	4	PL	1	
428	Asistent med. princ.	laborator	5	PL	1	CIM per determinata
429	Asistent med. princ.	laborator	4	PL	1	
430	Asistent med. princ.	laborator	3	PL	1	
431	Asistent med.	laborator	1	PL	1	
432	Ingrjitor curatenie		3	G	1	
433	Ingrjitor curatenie		3	G	1	CIM suspendat

Punct de recoltare sange

434	Asistent med. princ.	laborator	5	PL	1	
-----	----------------------	-----------	---	----	---	--

LABORATOR UNIC RADIOLOGIE SI IMAGISTICA MEDICALA

435	Medic primar-medic coordonator	radiologie si imag medicala	3	S	1
436	Medic specialist	radiologie si imag medicala	2	S	1
437	Fizician medical specialist	fizica	2	S	1
438	Asistent med. princ.	radiologie	5	S	1
439	Asistent med. princ.	radiologie	5	PL	1
440	Asistent med. princ.	radiologie	3	PL	1
441	Asistent med. princ.	radiologie	5	PL	1
442	Asistent med. princ.	radiologie	5	PL	1

RADIOTERAPIE

LABORATOR RECUPERARE MEDICINA FIZICA SI BALNEOLOGIE

443	Kinetoterapeut	fiziokinetoterap eut	3	S	1
444	Asistent med. princ.	balneofiziotera peut	5	S	1
445	Asistent med. princ.	balneofiziotera peut	5	PL	1
446	Asistent med.	balneofiziotera peut	1	PL	1
447	Asistent med.	balneofiziotera peut	1	PL	1
448	Asistent med.	balneofiziotera peut	1	PL	1
449	Asistent med. princ.	balneofiziotera peut	5	PL	1
450	Asistent med.	balneofiziotera peut	5	PL	1
451	Asistent med.	balneofiziotera peut	5	PL	1
452	Asistent med.	balneofiziotera peut	5	PL	1

SERVICIU DE ANATOMIE PATOLOGICA - 127 mp

Compartiment de Citologie					
453	Biolog specialist	bacteriologie	5	S	1

Compartiment de Histopatologie

454	Medic specialist	anatom. pat.	3	S	1	CIM suspendat
455	Asistent med. princ.	laborator	5	PL	1	CIM per. determinata
456	Asistent med. princ.	laborator	3	PL	1	

Compartiment de prosectura

457	Ingrijitor curatenie; autopsier		5	G	1/2+1/2	
-----	---------------------------------	--	---	---	---------	--

COMPARTIMENT CPIAAM

458	Medic rezident III	epidemiologie	0	S	1	
459	Asistent med. princ.	igienea	4	PL	1	
460	Agent DDD		5	G	1	
461	Asistent med. princ.	igienea	4	PL	1	vacant

BIROU EVALUARE ȘI STATISTICA MEDICALA

462	Analist programator IA - Sef birou cu delegatie		5	S	1	
463	Statistician med. princ.		5	M	1	
464	Asistent med.	generalist	3	PL	1	
465	Registrator medical principal	medicala	5	M	1	
466	Registrator medical	medicala	5	M	1	vacant

COMPARTIMENT EXPLORĂRI FUNCȚIONALE

467	Asistent med. debutant	generalist	5	PL	1	vacant
-----	------------------------	------------	---	----	---	--------

CABINET BOLI INFECTIOASE**CABINET ONCOLOGIE MEDICALA**

468	Asistent med. princ.	generalist	3	PL	1	
-----	----------------------	------------	---	----	---	--

CABINET PLANIFICARE FAMILIALĂ**CABINET DIABET ZAHARAT NUTRIȚIE ȘI BOLI METABOLICE**

469	Medic rezident III	diabet zaharat, nutriție și boli metabolice	0	S	1	
470	Asistent med. debutant	generalist	0	PL	1	vacant

DISPENSAR TBC

AMBULATORIUL INTEGRAT

CABINET MEDICINA INTERNA

471	Medic specialist	med. interna	5	S	1	CIM per. determinata
472	Medic rezident III	med. interna	0	S	1	
473	Asistent med. debutant	generalist	1	PL	1	vacant

CABINET CARDIOLOGIE

474	Asistent med. princ.	generalist	5	PL	1	
-----	----------------------	------------	---	----	---	--

CABINET O.R.L.

475	Medic specialist	ORL	5	S	1	
476		medicala	0	PL	1	CIM per. determinata

CABINET OFTALMOLOGIE

477		medicala	1	PL	1	CIM per. determinata
-----	--	----------	---	----	---	----------------------

CABINET CHIRURGIE GENERALA

478	Asistent med. princ.	medicala	3	PL	1	
-----	----------------------	----------	---	----	---	--

CABINET OBSTETRICA GINECOLOGIE

479	Asistent med. debutant	obst.ginec	0	PL	1	vacant
-----	------------------------	------------	---	----	---	--------

CABINET PEDIATRIE

480	Asistent med. debutant	pediatrie	1	PL	1	vacant
-----	------------------------	-----------	---	----	---	--------

CABINET ORTOPEDIE SI TRAUMATOLOGIE

481	Asistent med. debutant	medicala	0	S	1	CIM per. determinata
-----	------------------------	----------	---	---	---	----------------------

CABINET NEUROLOGIE

482	Asistent med. debutant	medicala	1	PL	1	vacant
-----	------------------------	----------	---	----	---	--------

CABINET DERMATOVENEROLOGIE

483	Medic rezident III	derm.vener.	0	S	1	
484	Asistent med. debutant	medicala	1	PL	1	vacant

CABINET PSIHIATRIE PEDIATRICA SI CABINET NEUROLOGIE PEDIATRICA

485	Medic specialist	psihiatrie pediatria	4	S	1	
486	Medic specialist	neurologie pediatria	2	S	1	CIM per determinata(3 ore)
487	Asistent med. princ.	medicala	5	PL	1	
488		medicala	1	PL	1	CIM per determinata

RECUPERARE , MEDICINA FIZICA SI BALNEOLOGIE

489			0	PL	1	CIM per determinata
-----	--	--	---	----	---	---------------------

CABINET PSIHIATRIE

490	Medic specialist	psihiatrie	2	S	1	vacant
491	Asistent med. princ.	medicala	1	PL	1	vacant

CABINET GASTROENTEROLOGIE

492	Medic specialist	gastroenterolog ie	2	S	1	
493	Asistent med. debutant	medicala	1	PL	1	vacant

CABINET REUMATOLOGIE

494	Medic specialist	reumatologie	2	S	1	
495		generalist	1	PL	1	CIM per determinata

CABINET STOMATOLOGIE (asigura si urgente)

496	Medic primar	ortod. si ortopedie dento	3	S	1	
497	Medic	stomatologie	4	S	1	
498	Medic	stomatologie	4	S	1	
499	Asistent med. debutant	generalist	0	PL	1	vacant

PERSONAL CURATENIE

500	Ingrjitor curatenie		3	G	1	vacant
501	Ingrjitor curatenie		1	G	1	CIM per determinata
502	Ingrjitor curatenie		3	G	1	vacant

APARAT FUNCTIONAL

COMPARTIMENT de MANAGEMENT al CALITATII SERVICIILOR MEDICALE

503	Medic specialist		2	S	1	vacant
504	Referent de specialitate debutant		0	S	1	CIM per.determinata
505	Referent debutant		0	M	1	CIM per.determinata
506	Expert debutant		0	S	1	CIM per.determinata

BIROU RESURSE UMANE

507	Economist IA - Sef birou	stiinte	5	S	1	CIM per.determinata
508	Inspector de specialitate I	Stiine Juridice / economice	5	S	1	
509	Economist IA	stiinte ec.	5	S	1	
510	Referent I A		5	M	1	

BIROU FINANCIAR -CONTABILITATE

511	Economist IA - Sef birou - cu delegatie	stiinte ec.	5	S	1	CIM per.determinata
512	Economist IA	stiinte ec.	5	S	1	CIM per.determinata
513	Economist II	stiinte ec.	1	S	1	
514	Casier I		5	M	1	

BIROU APROVIZIONARE, TRANSPORT, ADMINISTRATIV ,SECURITATEA MUNCII, PSI, PROTECTIE CIVILA SI SITUATII DE URGENTA

515	Secretar-dactilograf I		5	M	1	
516	Tehnician IA		5	M	1	
517	Arhivar I		2	M	1	
518	Magaziner I		4	M	1	

COMPARTIMENT ACHIZITII PUBLICE, CONTRACTARE

519	Economist I	stiinte ec.	3	S	1	
520	Consilier juridic IA	stiinte juridice	5	S	1	CIM per.determinata

COMPARTIMENT TEHNIC

521	Inginer I	tehnic	2	S	1	
-----	-----------	--------	---	---	---	--

522 Preot definitiv

522	Preot definitiv	teologie	5	S	1	
523	Popic curatenic		3	G	1	vacant

BLOC ALIMENTAR

524	bucatar II	bucatar II	5	G	1	CIM per.determinata
525	bucatar III	bucatar III	5	G	1	

526	bucatar IV	bucatar IV	5	G	1	CIM per. determinata
527	bucatar IV	bucatar IV	5	G	1	
528	Muncitor necalificat		3	G	1	
529	Muncitor necalificat		5	G	1	
530	Muncitor necalificat		5	G	1	vacant
531	Muncitor necalificat		2	G	1	CIM per. determinata
532	Muncitor necalificat		2	G	1	vacant

SPALATORIE

533	Spalatoareasa - cu gestiune		5	G	1	
534	Spalatoareasa		3	G	1	
535	Spalatoareasa		3	G	1	
536	Spalatoareasa		4	G	1	
537	Spalatoareasa		5	G	1	
538	Spalatoareasa		3	G	1	CIM per. determinata
539	Spalatoareasa		3	G	1	CIM per. determinata
540	Spalatoareasa		5	G	1	vacant

MUNCITORI

541	Muncitor I- sef formatie muncitori		5	G	1	vacant
542	Muncitor calificat I	electrician	5	G	1	
543	Muncitor calificat I	electrician	5	G	1	
544	Muncitor calificat I	electrician	5	G	1	
545	Muncitor calificat I	electrician	5	G	1	
546	Muncitor calificat I	electrician	5	G	1	
547	Muncitor calificat I	inst. sanit.	5	G	1	
548	Muncitor calificat I	inst. sanit.	5	G	1	CIM per. determinata
549	Muncitor calificat I	inst. sanit.	5	G	1	
550	Muncitor calificat I	foclist	5	G	1	
551	Muncitor calificat I	foclist	5	G	1	
552	Muncitor calificat I	foclist	5	G	1	
553	Muncitor calificat I	foclist	5	G	1	CIM per. determinata
554	Muncitor calificat I	lac.mec.	5	G	1	
555	Muncitor calificat	lac.mec.	4	G	1	CIM per. determinata
556	Muncitor calificat	zidar	5	G	1	CIM per. determinata
557	Muncitor calificat	zugrav	0	G	1	vacant
558	Muncitor calificat II	zugrav	5	G	1	
559	Muncitor calificat II	liftier	5	G	1	
560	Muncitor calificat II	liftier	5	G	1	

561	Muncitor calificat II	liftier	5	G	1	
562	Muncitor calificat II	telefonista	5	G	1	
563		pompier	4	G	1	vacant
564			5	G	1	vacant
565			5	G	1	vacant
566			5	G	1	vacant
567			5	G	1	vacant
568			5	G	1	vacant
569			5	G	1	vacant
570			5	G	1	vacant
571			5	G	1	vacant
572			5	G	1	vacant

SOFERI

570	Sofer II	sofer	5	G	1	CIM per determinata
571	Sofer II	sofer	5	G	1	
572	Sofer II	sofer	5	G	1	vacant

Paza

573	Paznic I		5	G	1	
574	Paznic		5	G	1	
575	Paznic I		5	G	1	
576	Paznic		5	G	1	CIM per determinata
577	Paznic		5	G	1	CIM per determinata
578	Paznic		5	G	1	
579	Paznic		5	G	1	
580	Paznic		5	G	1	vacant
581	Paznic		5	G	1	vacant
582	Paznic		5	G	1	vacant

SPATII VERZI

583	Muncitor necalificat		5	G	1	vacant
584	Muncitor necalificat		5	G	1	vacant
	TOTAL				584	

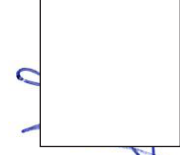
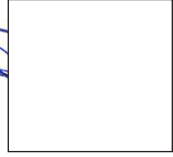
Posturile din prezentul stat de functii se regasesc si in statul de personal pe unitate .

Manager,
Dr. Robu Valentina

Director Medical,
Ec. Pana Florian

Consilier juridic
Jr. Raduca Alexandru

Sef Birou RUNOS
Ec. Iliescu Alexandru



SPITALUL MUNICIPAL "CARITAS" ROSIORII DE VEDE
 ADRESA : Str. Carpati nr. 33 ROSIORII DE VEDE
 TEL/FAX: 0247406611/ 0247466388
 PROPUNERE STAT DE FUNCTII MEDICI REZIDENTI
 VALABIL CU DATA DE 01.07 .2021

BUGETUL DE STAT

Nr. crt.	Denumire functie cf. Legii 250/2016	Specialitate	Gradati a	Nivel studii	Cuantu m post
0	1	2	3	5	6
1	Medic rezident anul IV	medicina	1	S	1
2	Medic rezident anul IV	derm.vener.	1	S	1
3	Medic rezident anul III	epidemiologie	1	S	1
4	Medic rezident anul IV	reabilitare	1	S	1
5	Medic rezident anul IV	diabet zaharat,	1	S	1
6	Medic rezident anul III	A.T.I.	2	S	1
7	Medic rezident anul I	C.P.U.	0	S	1
8	Medic rezident anul I	obstr-gineco	0	S	1
9	Medic rezident anul I	pediatrie	0	S	1
10	Medic rezident anul I	med.interna	0	S	1
11	Medic rezident anul I	neurologie	0	S	1
TOTAL					11

Posturile din prezentul stat de functii se regasesc si in statul de personal pe unitate .

Manager,
 Dr. Robu Valentina Dr. Dida Mariana

Director Medical,
 Ec. Pana Florian

Consilier juridic
 Jr. Raduca Alexandru



Sef Birou Rujnos
 Ec. Iliescu Alexandru